

# Centering Low-Resource Languages and Cultures in the Age of Large Language Models (CLRLC-LLMs).

NeurIPS 2025 Workshop.





“Enshrined in a language is the whole of a community's history and a large part of its cultural identity. The world is a mosaic of visions. To lose even one piece of this mosaic is a loss for all of us.”

— David Crystal, British Linguist.



# Workshop Goals



## Center Low-Resource Languages and Cultures in AI Innovation

Reframe the dominant narratives in language technology by placing low-resource languages and cultural contexts at the heart of LLM development.



## Advance Research and Scalable Approaches for Low-Resource LLMs

Showcase cutting-edge research, methods, and tools that improve data creation, model alignment, evaluation, and deployment for low-resource languages.



## Foster Global Collaboration and Cross-Disciplinary Exchange

Bring together researchers, linguists, technologists, developers, community leaders, and policy thinkers to share practical insights, challenges, and strategies.



## Ideate on Ethnically Culturally Grounded Data Principles

Create space to critically examine ethical, legal, and socio-cultural challenges in dataset collection for low-resource languages.



# Accepted Works at the CLRLC-LLMs Workshop, NeurIPS 2025



A word cloud of accepted works at the CLRLC-LLMs Workshop, NeurIPS 2025. The words are arranged in a roughly circular pattern, with some words appearing more frequently or in larger fonts than others. The colors of the words are: purple, pink, green, and blue. The words include: culturally-grounded, culturally-aligned, participatory, ethics, alignment, trustworthy, application, cross-lingual, ontologies, llm-augmented, self-reflection, health, rag, bias, instruction, broad-coverage, low-resource, detection, cognitive-bridging, and mental-manipulation.

culturally-grounded  
culturally-aligned  
participatory ethics  
alignment trustworthy  
application cross-lingual  
ontologies llm-augmented self-reflection  
health  
rag bias instruction  
broad-coverage  
low-resource detection  
cognitive-bridging  
mental-manipulation



# Program at a Glance

Time	Session	Details
09:00–09:30	Workshop Opening & Registration	Don Alberto 1
09:30–09:45	Welcome & Opening Remarks	Workshop Organizer- Oluchi
09:45–10:30	Keynote Speaker	Towards Representative, Trustworthy and Scalable Multilingual, Multi-cultural Evaluation. <b><i>Sunayana Sitaram (Microsoft India)</i></b>
10:30–10:45	Coffee Break	
10:45–11:00	Spotlight Presentation	Community-in-the-Loop: A Framework for Participatory Dataset Creation for Indigenous and African Languages. <b><i>Balogun David Taiwo</i></b>
11:00–11:15	Spotlight Presentation	Culturally aware instruction and alignment methods for low-resource Indian-language LLMs. <b><i>Praveen Tangarajan &amp; Madhvi Sharma</i></b>
11:15–11:30	Spotlight Presentation	ENLIVEN-1000: A Comprehensive Revitalization Framework for 1000+Endangered Languages via Broad-Coverage LID and LLM-Augmented MT. <b><i>Philip Meng</i></b>
11:30–11:45	Spotlight Presentation	AfriStereo: A Culturally Grounded Dataset for Evaluating Stereotypical Bias in Large Language Models. <b><i>Oche Ankeli</i></b>
11:45–12:00	Spotlight Presentation	Developing a Non-Western Culture Aware RAG Application. <b><i>Ariana Mondiri</i></b>
12:00–13:00	Lunch Break	

# Program at a Glance

Time	Session	Details
13:00–13:45	Keynote Speaker	Endangered Languages in the Age of LLM. <b>Emily Prud'hommeaux (Boston College)</b>
13:45–14:00	Spotlight Presentation	CL-PDE: A Heterogeneous Graph Framework for Cross-Lingual Mental Health Ontologies. <b>Isabel Michelle</b>
14:00–14:45	Keynote Speaker	Active Learning for Low-resource Efficient NLP. <b>Bonaventure F. P. Dossou (McGill University   Mila Québec)</b>
14:45–15:00	Spotlight Presentation	Beyond Surface Text: Revealing Distinctive Personas in LLMs using Cognitive Bridging. <b>Jongwon Ryu</b>
15:00–15:15	Afternoon Break	
15:15- 15:30	Spotlight Presentation	HealthAlign-Agents: Self-Play Reflective Prompting for Culturally Aligned Health Communication in Low-Resource Languages. <b>Aura Arefeh Yavary</b>
15:30– 16:30	Special Session	<b>Ethical Dataset Collection and Representation in Low-Resource Language Context</b>
16:30– 17:30	Closing Remarks	Workshop Chair – Joy Olusanya

# Keynote Speakers



**Sunayana Sitaram**

Microsoft Research India

9:45-10:30



**Emily Prud'hommeaux**

Boston College

13:00-13:45

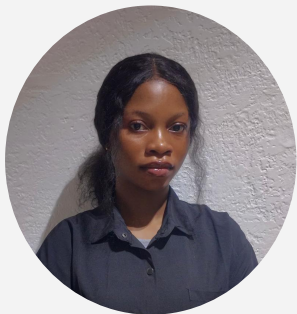


**Bonaventure F. P. Dossou**

McGill University | Mila Quebec AI Institute

14:00-14:45

# Organizers



**Joy Olusanya**

*Workshop Chair*

Obafemi Awolowo University



**Mary Salami**

University of California,  
Santa Barbara



**Cynthia Jayne Amol**

Maseno University | Tonative  
Community



**Yann Le Beux**

YUX Cultural AI Lab



**Sharon Ibejih**

Tonative



**Flora Oladipupo**

Tolaram Group



**Oluchi Audu**

YUX Cultural AI Lab

